



NEWBOLD SCHOOL

A great start for a great future



PROSPECTUS



“AN EXCEPTIONAL QUALITY OF EDUCATION”

Ofsted Inspection Report 2023

NEWBOLD SCHOOL

FOR MORE INFORMATION:

01344 421088

headteacher@newboldschool.co.uk

Popeswood Road, Binfield, Berkshire RG42 4AH

OUR WEBSITE:



DISCLAIMER:

This prospectus was printed in January 2024. Please make sure you check our website, www.newboldschool.co.uk, or contact us directly for the latest information before you commit to enrolling your child.

CREDITS:

Designed by Galya GEORGIEVA, GG Creative  /ggcreativebg

Photography: Asun OLIVAN  www.asunolivan.com

OFSTED REPORT OUTLINE



School report

Inspection of Newbold School

Popeswood Road, Binfield, Berkshire RG42 4AH

Inspection dates: 14 to 16 November 2023

Overall effectiveness	Outstanding
The quality of education	Outstanding
Behaviour and attitudes	Outstanding
Personal development	Outstanding
Leadership and management	Outstanding
Early years provision	Outstanding
Overall effectiveness at previous inspection	Good
Does the school meet the independent school standards?	Yes

Read the full Ofsted report here: <https://files.ofsted.gov.uk/v1/file/50237484>



CONTENT

26

Active Learning and Holistic Development in Early Years Education

28

Empowering Growth and Academic Excellence in Key Stage 1

30

Nurturing Excellence and Personal Development in Key Stage 2

35

Academic Development: Unlocking Potential, Embracing Diversity

39

Eco School: Empowering Eco-Learners, Proud Green Flag Recipients

43

Forest School: Holistic Approach to Personal Development and Mental Health

50

A Connected and Safe Community

60

School Calendar and Opening Hours

64

Joining the Newbold family

80

School Calendar - Terms and Holidays

83

School Admissions

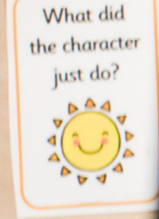




At Newbold School, we offer a unique educational experience that sets us apart. Here's why we stand out:

SMALL CLASSES, BIG OPPORTUNITIES

With small class sizes, pupils receive individual attention in a personalised learning environment. We prioritise teaching our children the importance of respect towards themselves, their peers, parents, teachers, others, and the environment.





INCLUSIVE COMMUNITY

Our warm, family-like atmosphere fosters belonging, positive social adjustment, and strong friendships. Respect is valued and practised in all interactions.

VALUE-DRIVEN EDUCATION

We integrate Christian values, emphasising love, tolerance, and respect for diverse perspectives, promoting inclusivity and understanding.



A young boy with dark hair, wearing a grey zip-up hoodie, grey sweatpants, and black rubber boots, is walking on a stone path in a forest. He is carrying a large, thick, curved log over his shoulder. The background is filled with green trees and foliage, creating a natural, outdoor setting. The lighting is soft, suggesting a bright but slightly overcast day.

GROWTH MINDSET

We nurture a growth mindset, empowering pupils to embrace challenges, learn from failures, develop resilience, and become self-learners.



CELEBRATING INDIVIDUALITY

Our balanced curriculum recognises and celebrates children's natural abilities, fostering their academic, artistic, and physical development.

CONNECTING WITH NATURE

Through Forest School activities, pupils develop an appreciation for the environment and a sense of responsibility.



RECOGNISING ACHIEVEMENTS

We commend exceptional work, kindness, and progress, reinforcing respect and acknowledging others' efforts.





TESTIMONIAL

Our daughter, Journie, loves Newbold School. As recent arrivals in England just under 3 years ago, we were delighted to discover a school where our child could flourish both academically and socially. Journie has not only thrived scholastically but has also formed deep friendships and developed a genuine love for her school and teachers. As parents, we couldn't be happier with the nurturing environment and the positive impact Newbold School has had on our child's growth.

*Bjorn and Jammie KARLMAN,
Newbold School parents*



ACTIVE LEARNING AND HOLISTIC DEVELOPMENT IN EARLY YEARS EDUCATION

In our Early Years programme, we harness the power of active learning and holistic development. Through hands-on experiences and intimate class settings, we create a nurturing environment that fosters individual growth. Our dynamic curriculum encourages play-based learning, empowering children to explore, discover, and

problem solve. We prioritise the development of cognitive, social, emotional, and physical skills, laying a strong foundation for lifelong learning. Language and communication flourish through engaging activities, while parents actively participate in their child's journey.

EMPOWERING GROWTH AND ACADEMIC EXCELLENCE IN KEY STAGE 1

In Key Stage 1, we empower growth and foster academic excellence through immersive learning experiences. With a limited number of pupils per class, our experienced educators offer personalised guidance, cultivating confidence and fostering curiosity. We prioritise comprehensive development, emphasising character building, social aptitude, and emotional intelligence. We establish a solid groundwork in English and maths, equipping pupils with essential skills in these fundamental domains. Additionally, our curriculum is enhanced by enriching prospects in the arts, sports, and technology, providing a well-rounded educational journey.





NURTURING EXCELLENCE AND PERSONAL DEVELOPMENT IN KEY STAGE 2

In Key Stage 2, we are committed to nurturing excellence and fostering personal development. Our thoughtfully designed curriculum challenges and inspires pupils, promoting critical thinking, creativity, and independent learning skills. With small class sizes, our dedicated teachers provide individualised attention, tailoring instruction to meet each pupil's unique needs and

abilities. We prioritise the development of positive character traits such as resilience, responsibility, and empathy, cultivating personal growth and fostering good citizenship. Through a range of engaging activities and extracurricular programmes, we offer opportunities for pupils to explore their interests, develop their talents, and broaden their horizons.

TESTIMONIAL

Newbold has such a welcoming family feel and provides a relaxed and calm environment for our children to thrive in. We feel our children are valued beyond academia and know that they are fully supported in reaching their full potential. Our girls particularly enjoy Forest School where they build on their appreciation and respect for our planet; they are always coming home and teaching us new ways to be more eco-friendly.

*Charlotte and Craig TURNER,
Newbold School parents*





ACADEMIC DEVELOPMENT

Unlocking potential, embracing diversity

Our classes offer a personalised learning environment, fostering individual academic growth. Our comprehensive curriculum encompasses a wide range of subjects, including English, Mathematics, Science, Design and Technology, Computing, History, Geography, Art and Design, Music, Physical Education (including swimming), Modern Language (French, Years 3 to 6), Religious Education, and Personal, Social, and Health Education. Through ongoing

assessment based on the Herts for Learning framework, we ensure that pupils progress at their own pace, while keeping parents and staff well-informed about their individual attainment and progress.

In Religious Education, we provide a Christian, Bible-based foundation while also exploring non-Christian religions with a positive and respectful attitude.

COMPUTING, TECHNOLOGY, AND E-LEARNING

Empowering digital skills

At Newbold School, we embrace technology to enhance learning experiences. Laptops are used for computing lessons, while interactive whiteboards and digital cameras are available in each classroom.

We have implemented Seesaw, an individualised and secure online learning

platform. Pupils utilise Seesaw for homework assignments and as a back-up for online learning if needed.

To foster responsibility, our Year 6 pupils serve as computer monitors, managing computing equipment for assemblies and ensuring its security.





ECO SCHOOL

Empowering eco-learners, proud Green Flag recipients

As an Eco School, our commitment to promoting environmental awareness and sustainable practices is unwavering. Our efforts have been recognised with the prestigious Green Flag, a testament to our dedication in shaping a greener and more sustainable future.

Being an Eco School means that we actively educate our pupils about environmental issues and encourage them to take actions that benefit the planet. We integrate eco-friendly practices into our curriculum

and daily operations, such as reducing waste, conserving energy, and promoting biodiversity.

The Green Flag represents our achievements in areas like waste management, energy conservation, water usage, and promoting a sustainable lifestyle. It serves as a testament to our ongoing commitment to environmental stewardship and inspiring the next generation of eco-conscious citizens.





FOREST SCHOOL

Holistic approach to personal development and mental health

Newbold School is proud to offer an exceptional Forest School Programme as an integral component of our educational approach. We firmly believe that immersing children in nature through this learner-led outdoor initiative is vital for their holistic development and mental health.

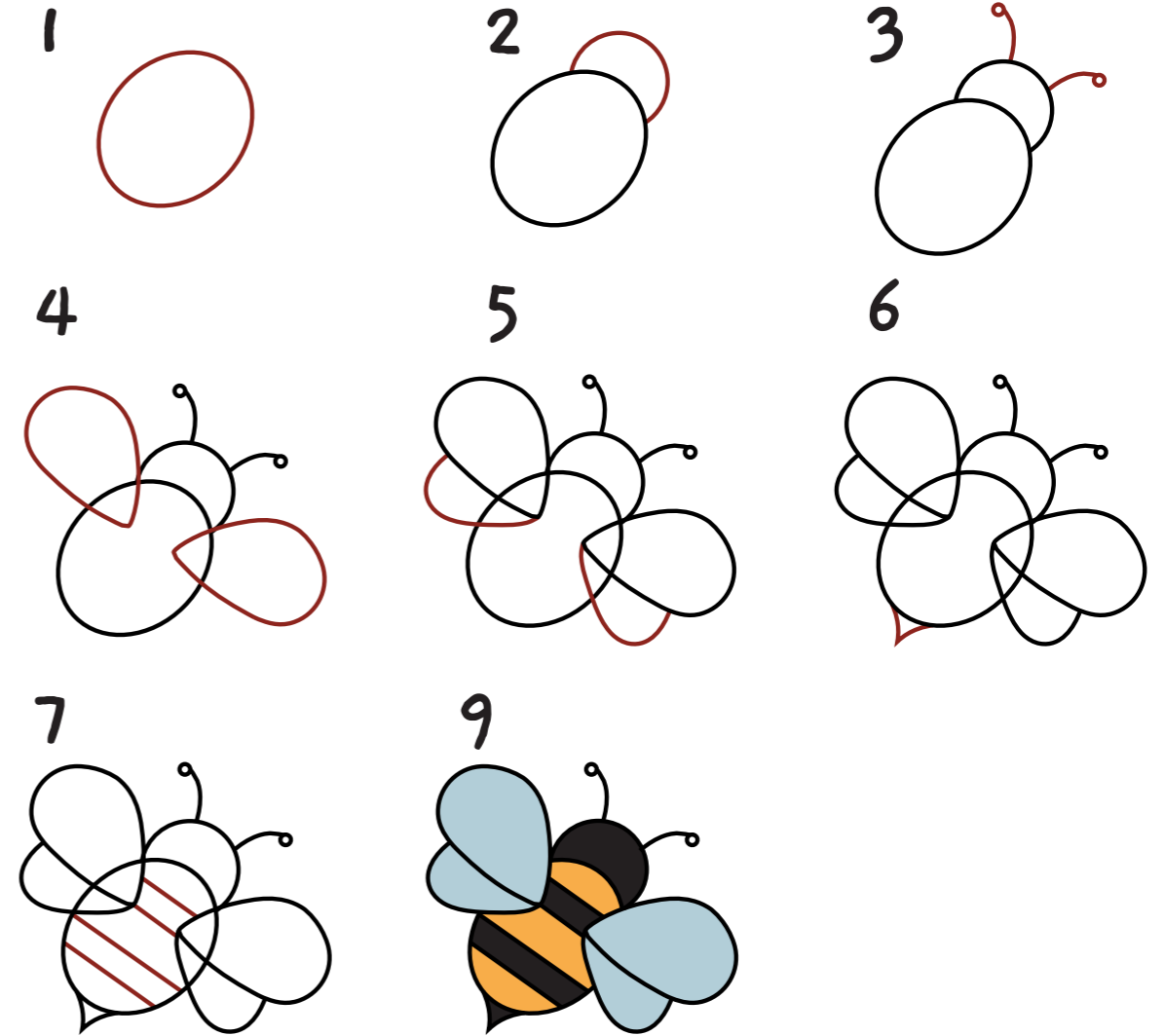
Our Forest School Programme is designed to nurture various aspects of a child's growth. It allows them to establish a profound connection with the natural world, fostering a deep appreciation for

the environment. Furthermore, it promotes creativity, cooperation, confidence, and self-esteem, enabling children to develop not only academically but also as well-rounded individuals.

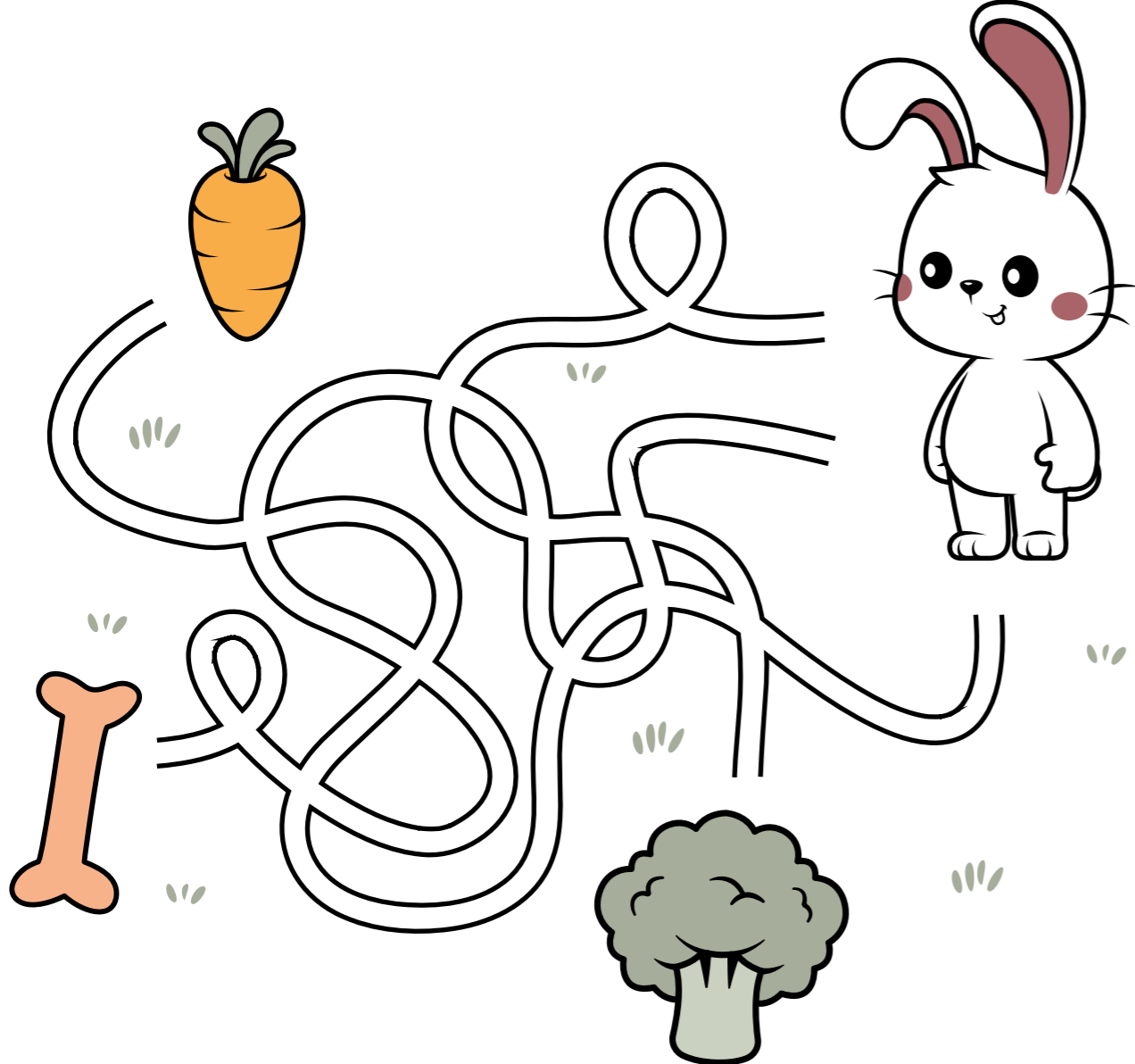
The beautiful woodlands surrounding our school provide an idyllic backdrop for these transformative experiences. Here, pupils have the opportunity to engage with nature in a unique and enriching manner, honing their creative thinking and aptitude for working harmoniously with the environment.



HOW TO DRAW A BEE



HELP THE RABBIT TO FIND THE CARROT





TESTIMONIAL

Newbold School is a fascinating school. My older two children attended from FI-Y6 (and have since excelled), and now my Hugo (9 years old) is doing the same. What I love about Newbold is the intimacy of learning that it provides, where pupils imbibe good values that make for solid characters.

I have seen firsthand how Newbold has helped my children to develop into well-rounded individuals with strong moral compasses. They are kind, compassionate, and responsible, and they are always willing to help others. I am confident that the foundation they have received at Newbold will serve them well academically and as good citizens for the future. I highly recommend Newbold School to any parent looking for a warm and nurturing environment where their child can learn and grow.

*Gifford RHAMIE,
Newbold School parent*

**A CONNECTED
AND SAFE
COMMUNITY**



COMMUNITY ENGAGEMENT

MAKING A DIFFERENCE

At Newbold School, we actively engage with our school and wider community, fostering connections and making a positive impact:

COMMUNITY PROGRAMMES

- Our pupils participate in local church programmes, carol singing at nursing homes, and supporting various charities.

FUNDRAISING INITIATIVES

- We lead fundraising events for causes like Red Nose Day and Children in Need.

PARENT-TEACHER PARTNERSHIP

- Collaborating for success.

We value the partnership between parents, guardians, and the school community:

REGULAR COMMUNICATION

- Our excellent weekly newsletter keeps parents informed about school activities and updates.

OPEN-DOOR POLICY

- We encourage informal conversations and welcome parent involvement in homework and school activities.

SAFEGUARDING

We prioritise the safety and well-being of our pupils:

STRINGENT PROCEDURES

- Staff and volunteers undergo thorough safeguarding checks.

SAFEGUARDING POLICY

- Our comprehensive policy is readily available on our website.





PTFA

BUILDING A STRONG COMMUNITY

Our Parent, Teacher, and Friends Association actively supports the school:

- SOCIAL AND FUNDRAISING ACTIVITIES**
The PTFA organises events and initiatives to enhance the school community.
- ENCOURAGING PARTICIPATION**
Everyone is invited to contribute and collaborate.

TESTIMONIAL

Having enjoyed being a Newbold School pupil myself from 1970 to 1977, it was without hesitation that we decided to send our two children to Newbold as well!

There is a strong emphasis on character development. Children are taught to be respectful, responsible, and compassionate individuals who are committed to making a positive impact on their communities. These qualities are essential for success both in and out of the classroom.

Newbold is proud of the sense of community that exists at the school. The pupils, parents, teachers, and staff all work together to create a warm and welcoming environment where everyone feels valued and supported. This sense of community is essential for helping the pupils thrive and achieve their full potential.

Newbold is a Christian school and goes to great lengths to foster an environment where children are able to express and grow their faith.

*David EMMERSON,
Newbold School parent*





SCHOOL CALENDAR AND OPENING HOURS



At our school, we strive to provide a convenient and flexible schedule for our pupils and families. Here are the details:

THE SCHOOL DAY



DROP-OFF TIME

08:45 and 08:55



END OF THE DAY

Monday to Thursday
at 15:30. Fridays,
at 12:30

EARLY YEARS SESSIONS

WEEK COMPOSITION:

The Early Years week consists of 9 sessions - five morning sessions (Monday to Friday) and four afternoon sessions (Monday to Thursday).



SESSION TIMINGS

Morning sessions
08:45 end at 12:15

Afternoon sessions
end at 15:30



PART-TIME AND FULL-TIME OPTIONS:

Children have the flexibility to join us part-time or full-time. We require a minimum attendance of three sessions per week, and we can accommodate individual family needs.

JOINING THE NEWBOLD FAMILY

Events and Gatherings





TESTIMONIAL

Our daughter Emma's genuine love for the school, her friends, and her teachers speaks volumes about the nurturing and engaging atmosphere at Newbold. From the moment she first stepped through the school doors, it was evident that she was not just entering a place of education but a community that values each child as an individual.

The emphasis on character development and values has undoubtedly contributed to Emma's growth over the last two years. What we also appreciate is that as parents, we are provided with opportunities to be actively involved in her school life and share those moments together as a family.

*Bisser and Miriam STOYKOV,
Newbold School parents*

At Newbold, we are more than a school; we are a family, and we enjoy spending time together. Here are some ways we do just that:

BAKE SALES

Newbold School bake sales are not just about buying pastries; they are delightful social gatherings. Families, pupils, teachers, and the community enjoy homemade vegetarian dishes, from pizza to cakes. These events fund school projects and foster connections.



MOTHER'S DAY COFFEE MORNING

Join us for a heartwarming Mother's Day Coffee Morning to celebrate mums and grandmas. Dads are welcome too. Our F1 and F2 children put on special performances. Held in the school hall before Mother's Day Sunday.





FATHER'S DAY BREAKFAST



We treat dads and grandpas to a scrumptious breakfast—toast, eggs, pastries, fruit, and hot drinks.

Father figures of F1 & F2 (Early Years) children are invited to stay and play, creating memorable moments.

EASTER EGG HUNT

In April, our children eagerly anticipate the chocolate-filled Easter Egg Hunt—an annual favourite.



SUMMER FÊTE – THE BIG ONE!

Our grandest fundraiser is the Summer Fête—a spectacular family day. Enjoy entertainment from auctions to sumo wrestling, face painting, and more. Don't miss the delicious fête food—it's the best in Berkshire and beyond.



TESTIMONIAL

I wouldn't be the person I am today without Newbold School. Growing up in the close-knit, caring environment with big places to play and think was hugely important to who I am today. A lot of what I do in my job now requires me to build and maintain relationships and communities. Newbold School modelled the very best of these for me, and I am hugely grateful to the school for preparing me so well.

*Emma LOWE,
Former Newbold School student*



SCHOOL CALENDAR

TERMS AND HOLIDAYS

THREE TERMS

Our school year begins in September and is divided into three terms, each lasting between ten to fourteen weeks.

ALIGNED WITH LOCAL EDUCATION AUTHORITY

We aim to align our term and holiday dates as closely as possible with the Local Education Authority, though there may be slight variations.

CALENDAR AVAILABILITY

You can access the school calendar on our website, which provides term dates, holiday dates, and inset days for each year.

We value the importance of a well-planned and flexible schedule to meet the needs of our pupils and families.



SCHOOL ADMISSIONS

Our admissions department is here to assist you throughout the year. We welcome inquiries and applications from interested families at any time.

We offer various opportunities for you to get to know our school better, including open days and year-specific events. If you can't make it to one of our scheduled events, we will provide you with an application card, which you can complete to express your interest. Once you've submitted your application, we will organise a taster day for your child. If a place is offered to your child after the taster day, simply confirm your acceptance.

**BOOK
YOUR
VISIT**

To book a visit or for any further inquiries, please call us at 01344 421088 or email us at headteacher@newboldschool.co.uk.

We look forward to assisting you on your journey with Newbold School.

FOR MORE INFORMATION:



01344 421088



headteacher@newboldschool.co.uk



newboldschool.co.uk



Popeswood Road, Binfield, Berkshire RG42 4AH